



www.jeffreygross.co.uk

CARDIFF VALE CAERPHILLY BRISTOL



Gwern Gwynfael
CAPEL LLANTILLERN



This charming three-bedroom mid-link house offers plenty of modern comfort in a smart 772 sq ft layout. You're welcomed by a bright, inviting reception room that's great for relaxing or having friends over. The contemporary kitchen is both stylish and practical, with lots of space to cook and get creative. Upstairs, the three bedrooms offer cosy spots to unwind, along with a modern bathroom. Outside, the landscaped rear garden is a real bonus—perfect for sunny days, BBQs, or just chilling out.

Comments by Mr Julian Preston



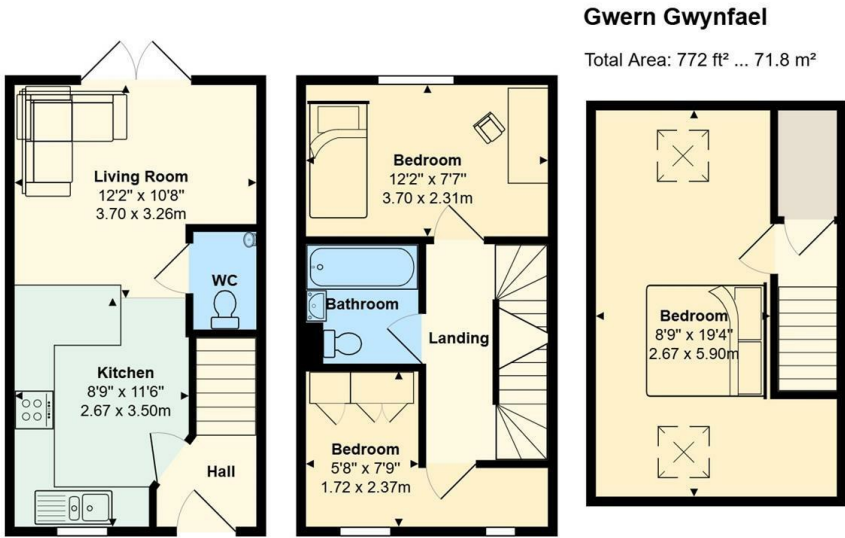
Property Specialist
Mr Julian Preston
Senior valuer

julian@jeffreygross.co.uk



This property benefits from a friendly community atmosphere while being conveniently close to local amenities and transport links. Whether you are a first-time buyer or looking to downsize, this terraced house presents an excellent opportunity to secure a lovely home in a sought-after location. Don't miss the chance to make this delightful property your own.

Comments by the Homeowner



All measurements are approximate and for display purposes only



Hallway

Kitchen 11'6" x 8'9" (3.51m x 2.67m)

Living Room 12'2" x 10'8" (3.71m x 3.25m)

W.C.

Landing

Bathroom

Bedroom 12'2" x 7'7" (3.71m x 2.31m)

Bedroom 7'9" x 5'8" min (2.36m x 1.73m min)

Bedroom 19'4" x 8'9" min (5.89m x 2.67m min)

Garden

A landscaped rear garden with attractive paved patio with slate borders. Wooden feather edge fencing. Wooden garden shed.

Parking

One allocated parking space directly out the front of the property with additional parking available.

Construction

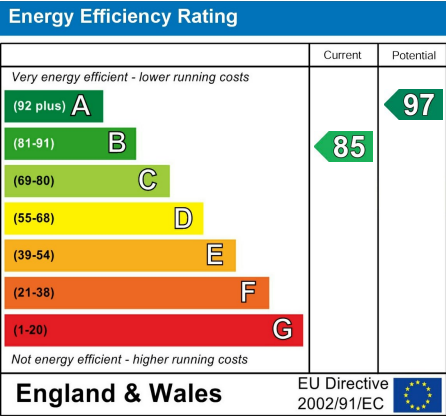
Timber framed with internal insulation boards and pitched roof

School Catchment

My English medium primary catchment area is Creigiau Primary School
Note - Howardian Primary and Ysgol Gynradd Groes-wen Primary School catchment areas are yet to be established. Applications are welcomed. Sylwer - Nid oes dalgylch wedi ei sefydlu ar gyfer Howardian Primary nac Ysgol Gynradd Groes-wen Primary School eto. Croesewir ceisiadau.
My English medium secondary catchment area is Radyr Comprehensive School (year 2024-25)
My Welsh medium primary catchment area is Ysgol Creigiau (CYM) (year 2024-25)
Sylwer - Nid oes dalgylch wedi ei sefydlu ar gyfer Howardian Primary nac Ysgol Gynradd Groes-wen Primary School eto. Croesewir ceisiadau. Note - Howardian Primary and Ysgol Gynradd Groes-wen Primary School catchment areas are yet to be established. Applications are welcomed.
My Welsh medium secondary catchment area is Ysgol Gyfun Gymraeg Plasmawr (year 2024-25)

Tenure

We have been advised that the property is Freehold. Your legal representative should confirm this.



Mobile & Braodband

Broadband speeds of up to 900 Mbps are available. There is a good chance of getting a connection good enough to support mobile services in a typical home, as well as outdoors.

Council Tax

Band D

EPC

Rated B



Gwern Gwynfael

Capel Llantillern, Cardiff, CF5 6GE

Asking Price

£280,000

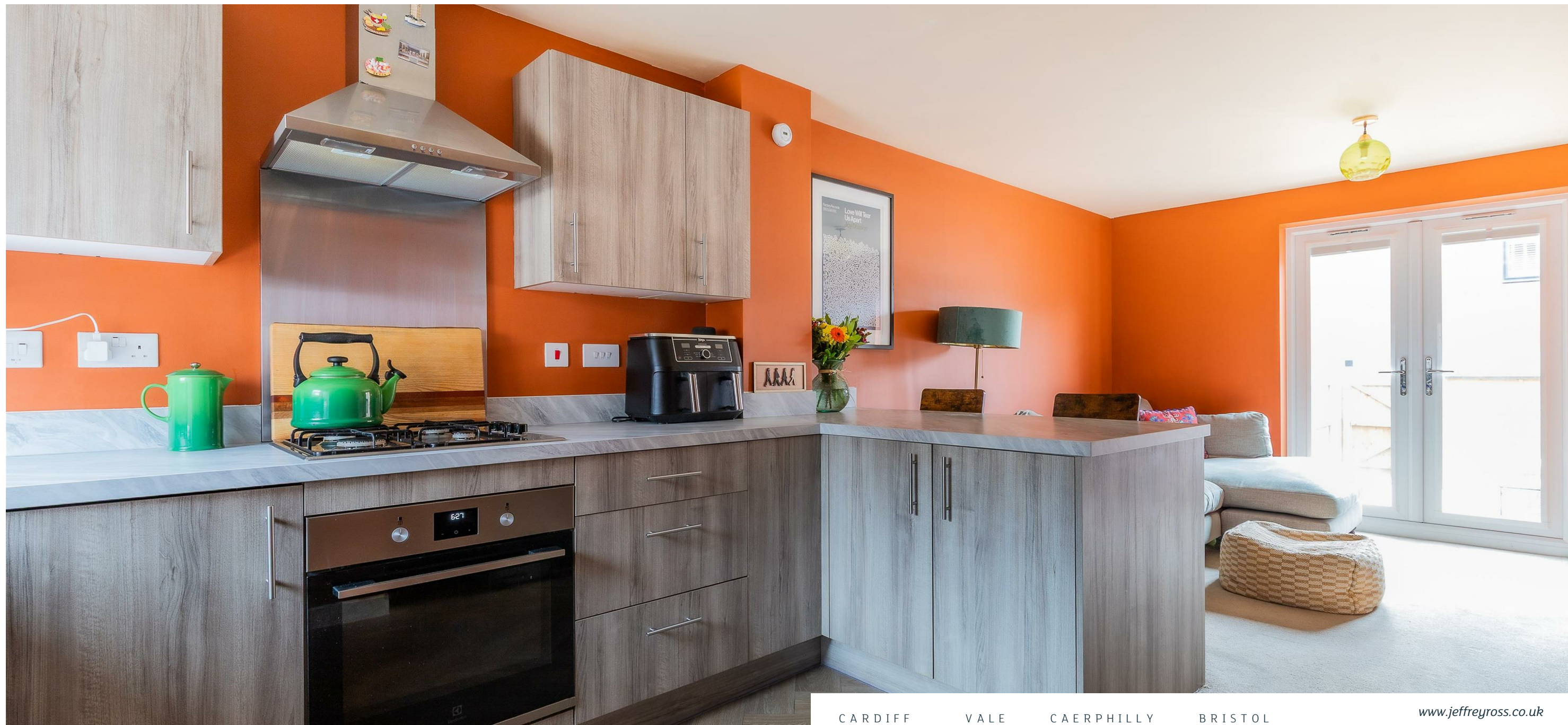
3 Bedroom(s)

1 Bathroom(s)

772.00 sq ft

Contact our
Pontcanna Branch
02920 499680

A charming three-bedroom mid-link house offers a delightful blend of modern living and comfort. Spanning an impressive 772 square feet, the property features a well-designed layout that is perfect for families or those seeking a bit more space. Upon entering, you are welcomed into a bright reception room that serves as an ideal space for relaxation or entertaining guests. The heart of the home is the contemporary kitchen, which is both functional and stylish, providing ample room for culinary creations. The property boasts three bedrooms, each offering a peaceful retreat at the end of the day. The well-appointed bathroom is designed with modern fixtures, ensuring convenience and comfort for all residents. One of the standout features of this home is the beautifully landscaped rear garden. This outdoor space is perfect for enjoying sunny afternoons, hosting barbecues, or simply unwinding in a tranquil setting.



CARDIFF

VALE

CAERPHILLY

BRISTOL

www.jeffreygross.co.uk